



PROFESSIONAL
5ETS

ETS5 for Beginners

Seven Steps towards Success

7 Steps toward success with the ETS5



Starting ETS5

STEP 1

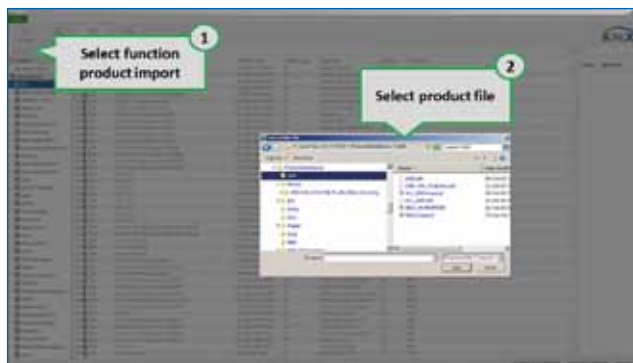


- The installation of the ETS is launched with the setup file provided by KNX. After completion of the installation process the ETS icon will appear on your desktop.
- After double clicking on the icon the ETS will be launched for the first time. The ETS can also be launched via the Windows “Program” folder.



Import of KNX Manufacturer Products (catalogues)

STEP 2



- In the following step, certified KNX products of various KNX manufacturers are imported. To do so, you will have to switch to the ETS “Catalogue” panel, where one should choose the function “Importing” (Label 1). The file selection dialog will appear (Label 2), in which you can choose the appropriate KNX product file. KNX Product files can be downloaded from the website of the appropriate manufacturer.

Note

An even simpler method of achieving this is to use the ETS APP Online KNX Product Catalogue. For further details, please visit the KNX website under Software/ETS Apps.

- The subsequent product import is done via a “wizard”. Here you can make a detailed choice of, for example, specific products that have to be imported or available languages.
- At the end of the “wizard”, all imported products will be listed in the catalogue overview, sorted according to manufacturer. From then on, the products are available for the creation of a new project.



Creating a new project

STEP 3

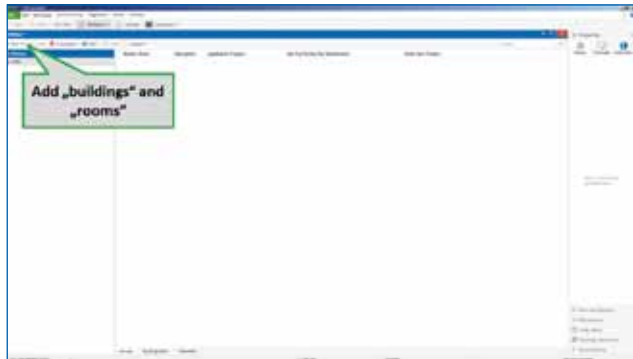


- In the overview page you are able to create a new project by clicking on the “+”. You may enter any project name.
- In the project settings, one can find all current settings of the KNX medium and the manner in which the group addresses are displayed.
- Once the project has been created, it will appear in the project list and will also be immediately and automatically opened.



Creating an Installation

STEP 4



4.a Laying out the building structure

- A project consists of KNX devices and links between them. In the actual installation the devices themselves are located in building parts, i.e. rooms. Consequently, you will also have to add the representation of these rooms or rather the building structure to the panel “Building” (Figure 4.a).

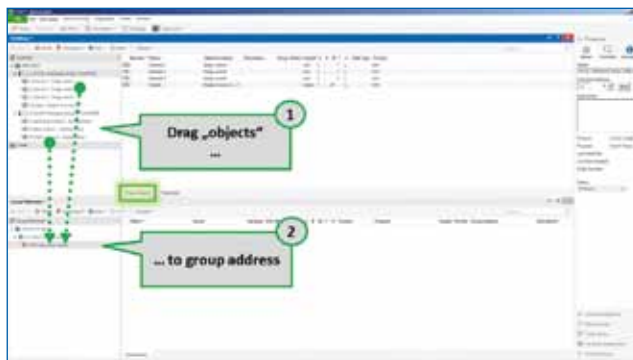
- In the building structure KNX devices within the installation are assigned to the place where they are physically mounted.



4.b Inserting KNX devices into the building structure

- In the following step the desired devices are inserted into the previously created room via the panel catalogue. (Figure 4.b).

- In principle, the used devices or rather their functionality correspond to an application that one wishes to realize, i.e. the lighting in the children’s bedroom, including dimming and sunblind control.



4.c Establishing links between KNX devices

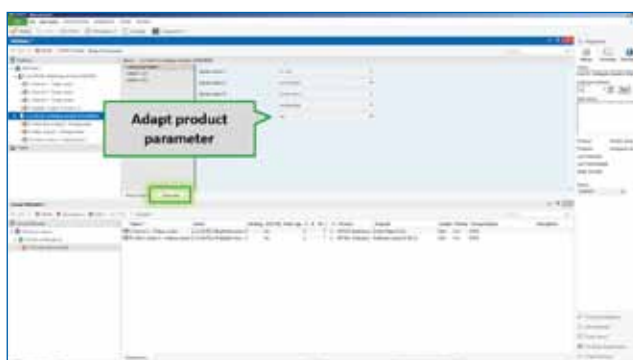
- After this the links (in KNX terms “Group addresses”) between the different devices (more precisely group objects) are created.

For this purpose a communication object of at least two different devices (green arrow in the figure) is dragged onto a group address that was previously created in the panel „Group addresses”. This represents a logical connection between the two devices (Figure 4.c).



Adjusting Product Parameters

STEP 5

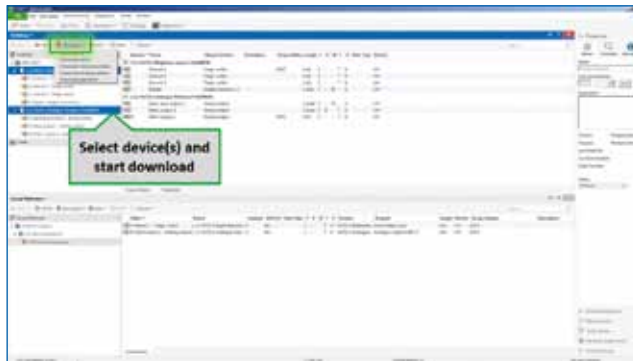


- The settings of a device, i.e. the switch-off delay of a staircase illumination, are set in the “parameter dialogue“ of the respective device.



Downloading a Project

STEP 6



- Once all the settings have been done, a download of the parameters into the devices is initiated. For this, all necessary devices are marked and the loading function is called via the context menu (right click) or the menu bar (Figure).

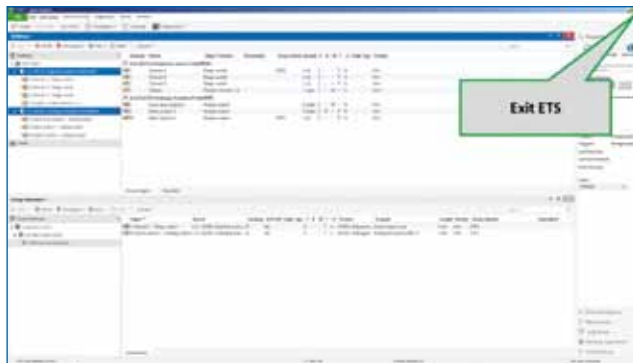
- The device status will be automatically updated once the loading process is completed.

The status indicates whether the loading process was completed correctly or whether errors occurred. If one wishes to verify this, a specific device can be selected and the status can be explicitly retrieved.



Closing the ETS

STEP 7



- Before exiting the ETS you should always create a back-up copy of your project (i.e. by exporting the project or by saving it in the Project Archive).

If this is currently not necessary, the ETS can be closed by clicking on the “Exit“ button.